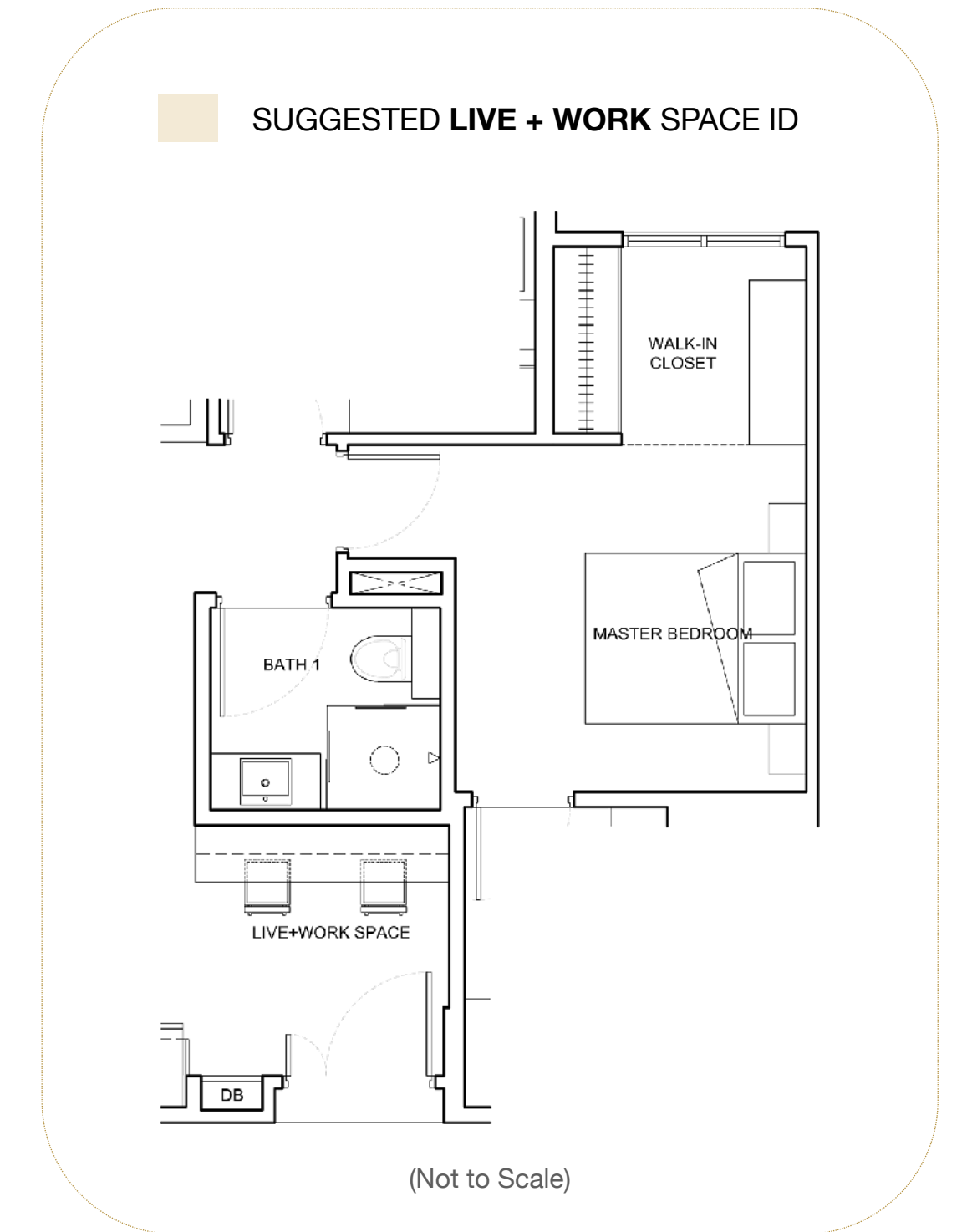
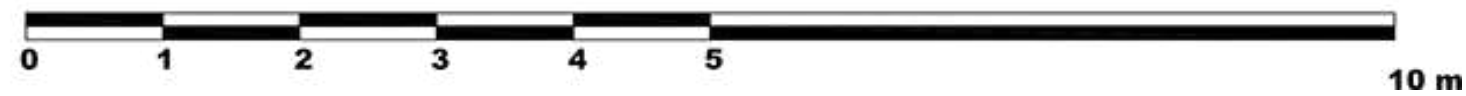
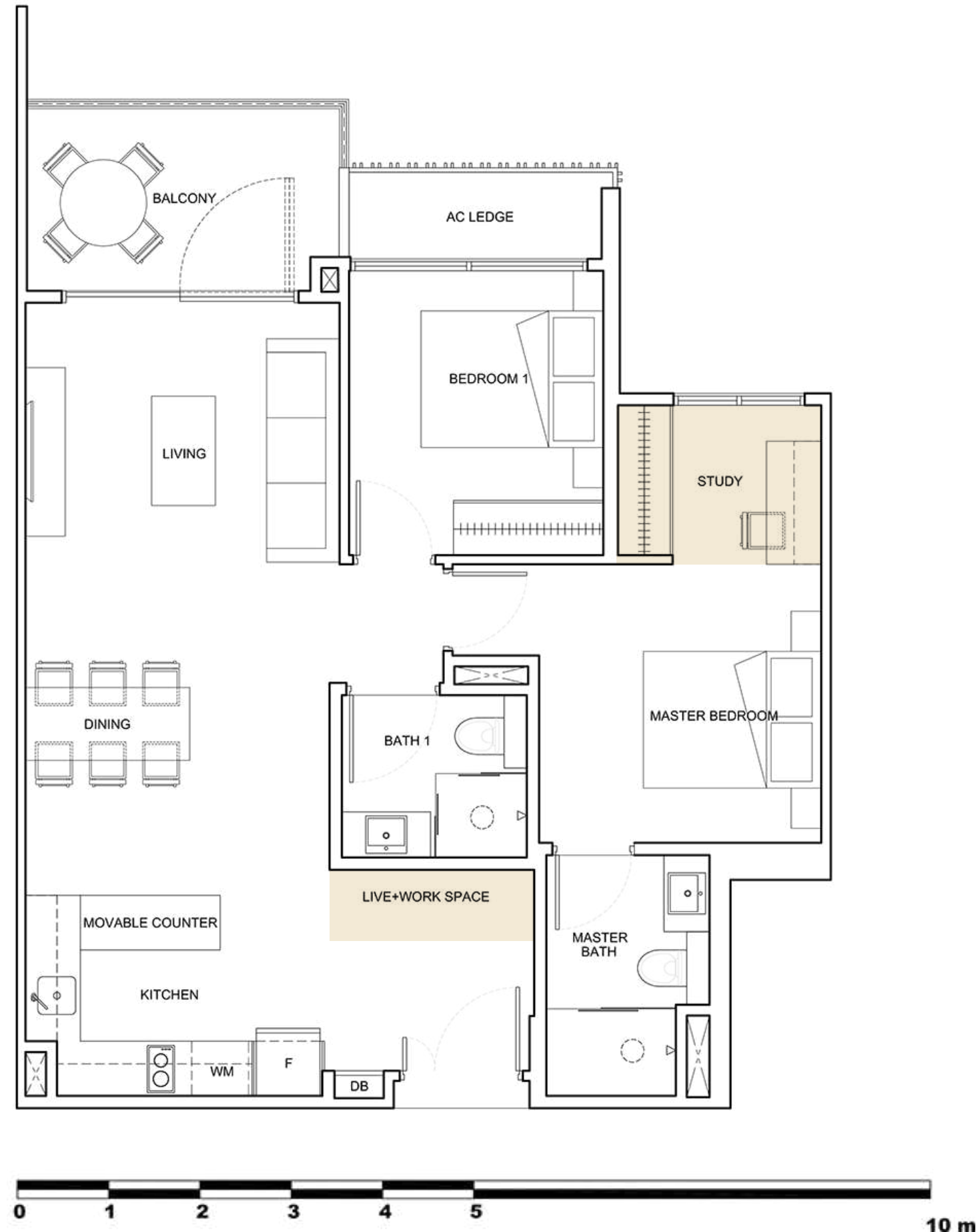


Type A2

2 Bedroom + Study

84 sqm - #02-02, #03-02, #04-02



The plans are subject to amendments as may be required or approved by the relevant authorities. Floor areas are estimates only and subject to final survey. Plans are not drawn to scale and do not form part of the contract. The balcony shall not be enclosed unless with the approved balcony screen. The approved balcony screen will be installed at buyer's own cost should the buyer intend to have balcony enclosure.

